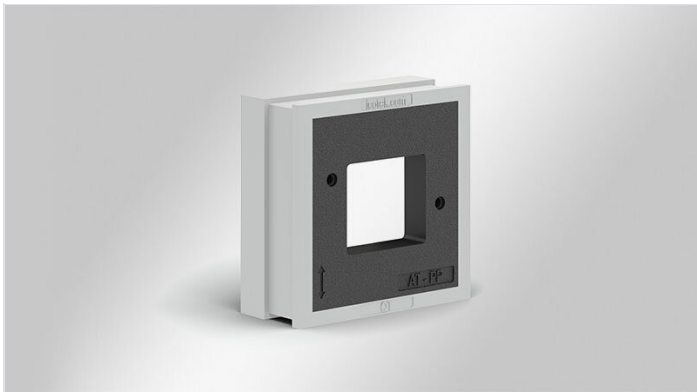


# QT-AT-PP adapter grommets

based on QT large, for PushPull connection technology / IP54



The grommet QT-AT-PP is constructed on the basis of a large QT cable grommet. The polyamide body is moulded with elastomer.

The cut-out enables a screw assembly of all compact connector housings based on the PushPull device connection technology.

The insertion of QT-AT-PP into an icotek cable entry frame enables the routing of cables with and without connectors in combination with the creation of interfaces for PushPull connectors within one cable entry system. Separate cut-outs for connectors are no longer necessary.

QT-AT-PP provides ingress protection of up to IP54.

IP54

HL3  
EN 45545-2

ECOLAB  
certified

UV  
ISO 4892-2A

RoHS  
compliant

REACH  
COMPLIANCE

Made in  
Germany

## Specifications

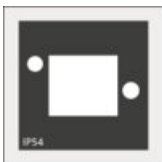
IP rating (EN 60529)	IP54
Material	Elastomer Body: Polyamide
Flame class	UL94-V0, self-extinguishing
Operating temperature	-40 C° to 100 C°
Properties	silicone free, halogen free

## Advantages & benefits

- Durch den Einsatz der QT-AT-PP Tülle können Einbaustecker/Einbaubuchsen direkt mit in die Kabeleinführung integriert werden
- Separate Lochung in der Gehäusewand nicht notwendig
- Platzsparende Lösung
- Montagekosten werden gesenkt

## Product types & sizes

QT-AT-PP



Part No.	42602
EAN	4251269323010
PU	10
Length	40 mm
Width	39 mm
Height	17 mm
Mounting height	2 mm