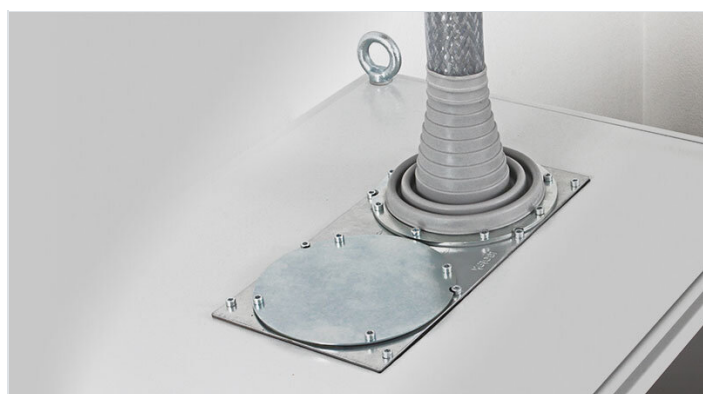


MP modular gland plates

for Rittal / Lohmeier enclosures / IP54



The module plates have cut-outs for fixing the KEL range cable entry systems KEL 24, KEL-U 24, KEL-QUICK 24, KEL-JUMBO, KEL-DPF, KEL-JUMBO flex and KEL-ULTRA flex.

The module plates can be installed on:

- Separation walls by Rittal
- closed enclosure bases and roofs (various manufacturers)
- Bases of Lohmeier enclosures
- Bases of Rittal enclosures via KDR-BMP gland plates

The module blank plate without cut-outs (Order No. 43882) is designed for closing unused cut-outs. This module plate can even be used for self-made cut-outs.

Module plates are supplied with a gasket.

IP54

RoHS
compliant

REACH
COMPLIANCE

Made in
Germany


Specifications


IP rating (EN 60529)	IP54
Material	Steel, zinc plated Material: Aluminium

Advantages & benefits


Product types & sizes


MP 0 	Part No.	43882
	EAN	4251269310898
	PU	1
	Length	338 mm
	Width	168 mm
	Height	2 mm

MP 1 	Part No.	43891	Suitable for cable entry systems: 3 x KEL 24 / KEL-U 24 / KEL-QUICK 24
	EAN	4251269310966	
	PU	1	
	Length	338 mm	
	Width	168 mm	
	Height	2 mm	
	Cut-out size	112 x 36 mm	


MP 2 	Part No.	43890	Suitable for cable entry systems: 4 x KEL 24 / KEL-U 24 / KEL-QUICK 24
	EAN	4251269310959	
	PU	1	
	Length	338 mm	
	Width	168 mm	
	Height	2 mm	
	Cut-out size	112 x 36 mm	

MP 3 	Part No.	43886	Max. cut-out width	80,5 mm
	EAN	4251269310911	Suitable for cable entry systems:	1 x KEL-JUMBO 1, 1 x KEL-JUMBO 2
	PU	1		
	Length	338 mm		
	Width	168 mm		
	Height	2 mm		
	Max. cut-out length	78 mm		

MP 4 	Part No.	43888	Max. cut-out width	80,5 mm
	EAN	4251269310935	Suitable for cable entry systems:	2 x KEL-JUMBO 1
	PU	1		
	Length	338 mm		
	Width	168 mm		
	Height	2 mm		
	Max. cut-out length	78 mm		

MP 5 	Part No.	43887	Max. cut-out width	80,5 mm
	EAN	4251269310928	Cut-out size	112 x 36 mm
	PU	1	Suitable for cable entry systems:	2 x KEL 24 / KEL-U 24 / KEL-QUICK 24, 1 x KEL-JUMBO 1
	Length	338 mm		
	Width	168 mm		
	Height	2 mm		
	Max. cut-out length	78 mm		

MP 6 	Part No.	43883	Suitable for cable entry systems:	5 x KEL-DPZ 50 / KEL-DPZ-CLICK 50 / KEL-DPF 50
	EAN	4251269310904		
	PU	1		
	Length	338 mm		
	Width	168 mm		
	Height	2 mm		
	Cut-out size, round	50,4 mm		

MP 7 	Part No.	43889	Suitable for cable entry systems:	3 x KEL-JUMBO flex
	EAN	4251269310942		
	PU	1		
	Length	338 mm		
	Width	168 mm		
	Height	2 mm		
	Cut-out size, round	75,5 mm		

MP 8 	Part No.	43894	Suitable for cable entry systems:	2 x KEL-ULTRA flex
	EAN	4251269310973		
	PU	1		
	Length	338 mm		
	Width	168 mm		
	Height	2 mm		
	Cut-out size, round	140 mm		

MP 10

Part No. **43896**
EAN **4251269320422**
PU **1**
Length **338 mm**
Width **168 mm**
Height **2 mm**
Cut-out size **112 × 36 mm**

Cut-out size, round **63,4 mm**
Suitable for cable entry systems: **2 × KEL 24 / KEL-U 24 / KEL-QUICK 24, 1 × KEL-DPZ 63 / KEL-DPZ-CLICK 63 / KEL-DPF 63**

MP 11

Part No. **43899**
EAN **4251269319020**
PU **1**
Length **338 mm**
Width **168 mm**
Height **2 mm**
Cut-out size, round **63,4 mm**

Suitable for cable entry systems: **5 × KEL-DPZ 63 / KEL-DPZ-CLICK 63 / KEL-DPF 63**