

KEL-BES brush plate

for cable pass-through



Brush plates KEL-BES for routing cables into server racks, control panels and electrical enclosures. KEL-BES is also an ideal solution for entry and exit of cables that are routed inside raised floors, e.g. in computer centres.

The brush plates can either be mounted via screws or via expanding rivets.

The KEL-BES plates match exactly the cut-out dimensions 10-, 16- and 24-pin standard industrial connectors.



RoHS
compliant



Made in
Germany

Specifications

Material	Polyamide Brushes: Polyamide
Flame class	UL94-V0, self-extinguishing
Operating temperature	-20 C° to 90 C°
Properties	silicone free, halogen free
Mounting options	Screw type mounting, Riveting

Advantages & benefits

- Sehr einfache Bestückung und Montage
- Vielseitig einsetzbar
- Abschirmung gegen Staub und Zugluft
- Optische Abdichtung
- Kantenschutz

Product types & sizes

KEL-BES 24



Part No.	51515
EAN	4251269315442
PU	10
Length	147 mm
Width	58 mm
Height	10 mm
Mounting height	10 mm

Cut-out size	112 x 36 mm
No. of screw holes	4
Diam. of screw holes	5,8 mm

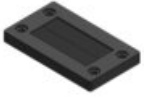
KEL-BES 16



Part No.	51510
EAN	4251269315435
PU	10
Length	120 mm
Width	58 mm
Height	10 mm
Mounting height	10 mm

Cut-out size	86 x 36 mm
No. of screw holes	4
Diam. of screw holes	5,8 mm

KEL-BES 10



Part No.

51505

Cut-out size

65 × 36 mm

EAN

4251269315428

No. of screw holes

4

PU

10

Diam. of screw holes

5,8 mm

Length

100 mm

Width

58 mm

Height

10 mm

Mounting height

10 mm

□