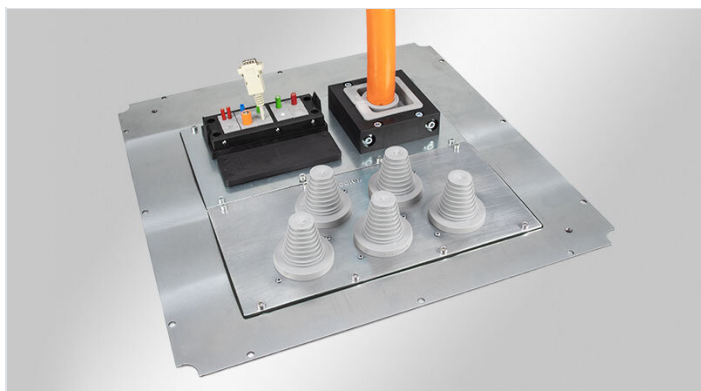


# KDR-BMP enclosure base plate for module plates

for Rittal TS 8 & Rittal VX25 enclosures / IP54



The KDR-BMP gland plates are ideally suited for Rittal TS 8 / VX25 enclosures and can be used instead of the 3 piece standard gland plates. Rittal standard mounting clips / screws are used for fixing the plate.

On KDR-BMP gland plates, our MP Module Plates MP can be easily mounted and used for installation of cable entry components.

IP54

RoHS  
compliant

REACH  
COMPLIANCE

Made in  
Germany

## Specifications

IP rating (EN 60529)	IP54
Material	Steel, zinc plated

## Advantages & benefits

- Easy assembly and removal
- No additional sheet metal work required

## Product types & sizes

### KDR-BMP-VX25 600|600



Part No.	43334
EAN	4251269321641
PU	1
Length	487 mm
Width	487 mm
Height	8,5 mm
For enclosure width	600 mm

For enclosure depth	600 mm
For no. of module plates	2

### KDR-BMP-VX25 800|600



Part No.	43340
EAN	4251269321658
PU	1
Length	687 mm
Width	487 mm
Height	8,5 mm
For enclosure width	800 mm

For enclosure depth	600 mm
For no. of module plates	3

### KDR-BMP-VX25 1000|600



Part No.	43346
EAN	4251269321665
PU	1
Length	887 mm
Width	487 mm
Height	8,5 mm
For enclosure width	1.000 mm

For enclosure depth	600 mm
Division bar	ohne Mittelstrebe
For no. of module plates	4

KDR-BMP-VX25  
1200|600



Part No. **43352**  
EAN **4251269321672**  
PU **1**  
Length **1.087 mm**  
Width **487 mm**  
Height **8,5 mm**  
For enclosure width **1.200 mm**

For enclosure depth **600 mm**  
Division bar **ohne Mittelstrebe**  
For no. of module plates **5**

KDR-BMP-TS8 600|400



Part No. **43300**  
EAN **4251269309663**  
PU **1**  
Length **468 mm**  
Width **262 mm**  
Height **12 mm**

For enclosure width **600 mm**  
For enclosure depth **400 mm**  
Division bar **ohne Mittelstrebe**  
For no. of module plates **1**

KDR-BMP-TS8 600|500



Part No. **43302**  
EAN **4251269309670**  
PU **1**  
Length **468 mm**  
Width **362 mm**  
Height **12 mm**

For enclosure width **600 mm**  
For enclosure depth **500 mm**  
Division bar **ohne Mittelstrebe**  
For no. of module plates **2**

KDR-BMP-TS8 600|600



Part No. **43304**  
EAN **4251269309687**  
PU **1**  
Length **468 mm**  
Width **462 mm**  
Height **12 mm**

For enclosure width **600 mm**  
For enclosure depth **600 mm**  
Division bar **ohne Mittelstrebe**  
For no. of module plates **2**

KDR-BMP-TS8 800|400



Part No. **43306**  
EAN **4251269309694**  
PU **1**  
Length **668 mm**  
Width **262 mm**  
Height **12 mm**


For enclosure width **800 mm**  
For enclosure depth **400 mm**  
Division bar **ohne Mittelstrebe**  
For no. of module plates **1**


KDR-BMP-TS8 800|500





Part No. **43308**  
EAN **4251269309700**  
PU **1**  
Length **668 mm**  
Width **362 mm**  
Height **12 mm**


For enclosure width **800 mm**  
For enclosure depth **500 mm**  
Division bar **ohne Mittelstrebe**  
For no. of module plates **3**


	<b>KDR-BMP-TS8 800 600</b>	Part No.	<b>43310</b>	For enclosure width	<b>800 mm</b>
		EAN	<b>4251269309717</b>	For enclosure depth	<b>600 mm</b>
		PU	<b>1</b>	Division bar	<b>ohne Mittelstrebe</b>
		Length	<b>668 mm</b>	For no. of module plates	<b>3</b>
		Width	<b>462 mm</b>		
		Height	<b>12 mm</b>		


	<b>KDR-BMP-TS8 1000 400</b>	Part No.	<b>43312</b>	For enclosure width	<b>1.000 mm</b>
		EAN	<b>4251269309724</b>	For enclosure depth	<b>400 mm</b>
		PU	<b>1</b>	Division bar	<b>mit Mittelstrebe</b>
		Length	<b>427 mm</b>	For no. of module plates	<b>1</b>
		Width	<b>262 mm</b>		
		Height	<b>12 mm</b>		

	<b>KDR-BMP-TS8 1000 500</b>	Part No.	<b>43314</b>	For enclosure width	<b>1.000 mm</b>
		EAN	<b>4251269309731</b>	For enclosure depth	<b>500 mm</b>
		PU	<b>1</b>	Division bar	<b>mit Mittelstrebe</b>
		Length	<b>427 mm</b>	For no. of module plates	<b>2</b>
		Width	<b>362 mm</b>		
		Height	<b>12 mm</b>		

	<b>KDR-BMP-TS8 1000 600</b>	Part No.	<b>43316</b>	For enclosure width	<b>1.000 mm</b>
		EAN	<b>4251269309748</b>	For enclosure depth	<b>600 mm</b>
		PU	<b>1</b>	Division bar	<b>mit Mittelstrebe</b>
		Length	<b>427 mm</b>	For no. of module plates	<b>2</b>
		Width	<b>462 mm</b>		
		Height	<b>12 mm</b>		

	<b>KDR-BMP-TS8 1200 400</b>	Part No.	<b>43318</b>	For enclosure width	<b>1.200 mm</b>
		EAN	<b>4251269309755</b>	For enclosure depth	<b>400 mm</b>
		PU	<b>1</b>	Division bar	<b>mit Mittelstrebe</b>
		Length	<b>527 mm</b>	For no. of module plates	<b>1</b>
		Width	<b>262 mm</b>		
		Height	<b>12 mm</b>		

	<b>KDR-BMP-TS8 1200 500</b>	Part No.	<b>43320</b>	For enclosure width	<b>1.200 mm</b>
		EAN	<b>4251269309762</b>	For enclosure depth	<b>500 mm</b>
		PU	<b>1</b>	Division bar	<b>mit Mittelstrebe</b>
		Length	<b>527 mm</b>	For no. of module plates	<b>3</b>
		Width	<b>362 mm</b>		
		Height	<b>12 mm</b>		

	<b>KDR-BMP-TS8 1200 600-r</b>	Part No.	<b>43324</b>	For enclosure width	<b>1.200 mm</b>
		EAN	<b>4251269309786</b>	For enclosure depth	<b>600 mm</b>
		PU	<b>1</b>	Division bar	<b>mit Mittelstrebe</b>
		Length	<b>527 mm</b>	For no. of module plates	<b>3</b>
		Width	<b>462 mm</b>		
		Height	<b>12 mm</b>		

KDR-BMP-TS8  
1200|600-I



Part No.  
EAN  
PU  
Length  
Width  
Height

**43322**  
**4251269309779**  
**1**  
**527 mm**  
**462 mm**  
**12 mm**

For enclosure width  
For enclosure depth  
Division bar  
For no. of module plates

**1.200 mm**  
**600 mm**  
**mit Mittelstrebe**  
**3**

---

□