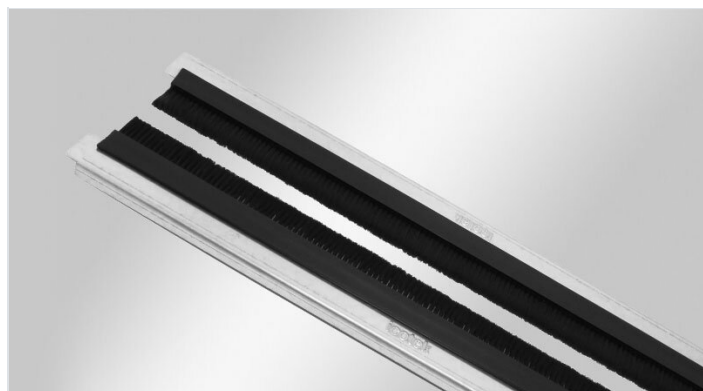


# KDR-BES split gland plates with brush grommets

for Rittal TS 8 enclosures



The new 2-piece enclosure gland plates KDR-BES-TS8 are supplied with preassembled brush grommets.

The gland plates are installed with standard Rittal clips.

Depending on the maximum cable diameter to be routed, the 2 halves of the brush gland plate are aligned further or closer to each other.

The gland plates KDR-BES-TS8 are perfect for protection of the enclosure interior against dirt.

RoHS  
compliant

REACH  
COMPLIANCE

Made in  
Germany

## Specifications

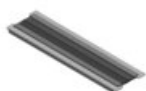
<b>Material</b>	Base plate: Steel, zinc plated Brushes: Polyamide
<b>Operating temperature</b>	-20 C° to 90 C°
<b>Properties</b>	silicone free, halogen free

## Advantages & benefits

- During assembly, almost the complete base of the enclosure can be used for installation of cables
- Subsequent assembly possible

## Product types & sizes

**KDR-BES-TS8-600-58000**



Part No.	<b>58000</b>
EAN	<b>4251269315787</b>
PU	<b>1</b>
Width	<b>125 mm</b>
Height	<b>16 mm</b>
Length	<b>458 mm</b>

For enclosure width	<b>600 mm</b>
Sight size of base opening	<b>435 mm</b>

**KDR-BES-TS8-800-58006**



Part No.	<b>58006</b>
EAN	<b>4251269315794</b>
PU	<b>1</b>
Width	<b>125 mm</b>
Height	<b>16 mm</b>
Length	<b>658 mm</b>

For enclosure width	<b>800 mm</b>
Sight size of base opening	<b>635 mm</b>

**KDR-BES-TS8-1000-58012**



Part No.	<b>58012</b>
EAN	<b>4251269315800</b>
PU	<b>1</b>
Width	<b>125 mm</b>
Height	<b>16 mm</b>
Length	<b>858 mm</b>

For enclosure width	<b>1.000 mm</b>
Sight size of base opening	<b>835 mm</b>
Division bar	<b>ohne Mittelstrebe</b>

**KDR-BES-TS8-1200-58018**



Part No.  
EAN  
PU  
Width  
Height  
Length

**58018**  
**4251269315817**  
**1**  
**125 mm**  
**16 mm**  
**518 mm**

For enclosure width  
Sight size of base opening

**1.200 mm**  
**495 mm**

---

□