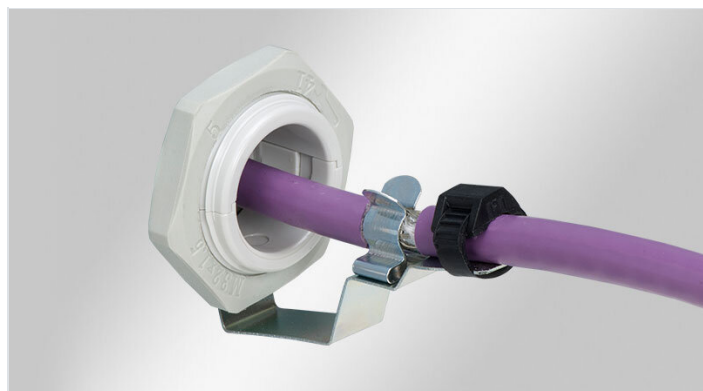


# KVT-EMC bracket with shield clamp

for split cable glands KVT and QVT



The KVT-EMC brackets in combination with the split cable glands KVT and QVT combine routing, EMC shield earthing and strain relief. The connection to the earth potential is possible via the enclosure wall or an earthing tape.

Cables pass through the split cable glands and lead directly into the EMC clamps.

Separate functions (according to regulations) carried out quickly and easily!



RoHS  
compliant



Made in  
Germany



## Specifications

<b>Material</b>	Mild steel, galvanically zinc plated
<b>Properties</b>	vibration proof
<b>Mounting options</b>	Fasten with locknut

## Advantages & benefits

- Sehr einfache Bestückung und Montage
- Optimale Kontaktierung des Kabelschirms
- Schirmkontaktierung und Zugentlastung voneinander getrennt
- Nachträgliche Montage möglich
- Zusätzliche Aufnahme (M5 Bohrung) für Masseband bzw. PE-Leiter
- Als Ersatz für EMV Verschraubungen, auch für konfektionierte Kabel

## Product types & sizes

### KVT-EMC-25|SKL 1.5-3



Part No.	<b>37180.1</b>
EAN	<b>4251269305283</b>
PU	<b>5</b>
No. of shield clamps	<b>1</b>
For max. no. of cables	<b>1</b>
Min. shield diam.	<b>1,5 mm</b>
Max. shield diam.	<b>3 mm</b>


Length	<b>60 mm</b>
Width	<b>36 mm</b>
Height	<b>39 mm</b>
Suitable for cable entry systems:	<b>KVT-ER 25, KVT 25, QVT 25, KEL-DPF 25</b>

### KVT-EMC-25|SKL 3-6




Part No.	<b>37180.2</b>
EAN	<b>4251269305290</b>
PU	<b>5</b>
No. of shield clamps	<b>1</b>
For max. no. of cables	<b>1</b>
Min. shield diam.	<b>3 mm</b>
Max. shield diam.	<b>6 mm</b>


Length	<b>60 mm</b>
Width	<b>36 mm</b>
Height	<b>39 mm</b>
Suitable for cable entry systems:	<b>KVT-ER 25, KVT 25, QVT 25, KEL-DPF 25</b>

	<b>KVT-EMC-25 SKL 6-8</b>	Part No.	<b>37180.3</b>	Length	<b>60 mm</b>
		EAN	<b>4251269305306</b>	Width	<b>36 mm</b>
		PU	<b>5</b>	Height	<b>39 mm</b>
		No. of shield clamps	<b>1</b>	Suitable for cable entry systems:	<b>KVT-ER 25, KVT 25, QVT 25, KEL-DPF 25</b>
		For max. no. of cables	<b>1</b>		
		Min. shield diam.	<b>6 mm</b>		
		Max. shield diam.	<b>8 mm</b>		


---

	<b>KVT-EMC-25 SKL 8-11</b>	Part No.	<b>37180.4</b>	Length	<b>60 mm</b>
		EAN	<b>4251269305313</b>	Width	<b>36 mm</b>
		PU	<b>5</b>	Height	<b>39 mm</b>
		No. of shield clamps	<b>1</b>	Suitable for cable entry systems:	<b>KVT-ER 25, KVT 25, QVT 25, KEL-DPF 25</b>
		For max. no. of cables	<b>1</b>		
		Min. shield diam.	<b>8 mm</b>		
		Max. shield diam.	<b>11 mm</b>		


---

	<b>KVT-EMC-32 SKL 1.5-3</b>	Part No.	<b>37181.1</b>	Length	<b>60 mm</b>
		EAN	<b>4251269305320</b>	Width	<b>43 mm</b>
		PU	<b>5</b>	Height	<b>48 mm</b>
		No. of shield clamps	<b>1</b>	Suitable for cable entry systems:	<b>KVT-ER 32, KVT 32, KVT 32-W90, QVT 32, KEL-BES-S 32</b>
		For max. no. of cables	<b>1</b>		
		Min. shield diam.	<b>1,5 mm</b>		
		Max. shield diam.	<b>3 mm</b>		


---

	<b>KVT-EMC-32 SKL 3-6</b>	Part No.	<b>37181.2</b>	Length	<b>60 mm</b>
		EAN	<b>4251269305337</b>	Width	<b>43 mm</b>
		PU	<b>5</b>	Height	<b>48 mm</b>
		No. of shield clamps	<b>1</b>	Suitable for cable entry systems:	<b>KVT-ER 32, KVT 32, KVT 32-W90, QVT 32, KEL-DPF 32, KEL-BES-S 32</b>
		For max. no. of cables	<b>1</b>		
		Min. shield diam.	<b>3 mm</b>		
		Max. shield diam.	<b>6 mm</b>		

---

	<b>KVT-EMC-32 SKL 6-8</b>	Part No.	<b>37181.3</b>	Length	<b>60 mm</b>
		EAN	<b>4251269305344</b>	Width	<b>43 mm</b>
		PU	<b>5</b>	Height	<b>48 mm</b>
		No. of shield clamps	<b>1</b>	Suitable for cable entry systems:	<b>KVT-ER 32, KVT 32, KVT 32-W90, QVT 32, KEL-DPF 32, KEL-BES-S 32</b>
		For max. no. of cables	<b>1</b>		
		Min. shield diam.	<b>6 mm</b>		
		Max. shield diam.	<b>8 mm</b>		

---

	<b>KVT-EMC-32 SKL 8-11</b>	Part No.	<b>37181.4</b>	Length	<b>60 mm</b>
		EAN	<b>4251269305351</b>	Width	<b>43 mm</b>
		PU	<b>5</b>	Height	<b>48 mm</b>
		No. of shield clamps	<b>1</b>	Suitable for cable entry systems:	<b>KVT-ER 32, KVT 32, KVT 32-W90, QVT 32, KEL-DPF 32, KEL-BES-S 32</b>
		For max. no. of cables	<b>1</b>		
		Min. shield diam.	<b>8 mm</b>		
		Max. shield diam.	<b>11 mm</b>		

