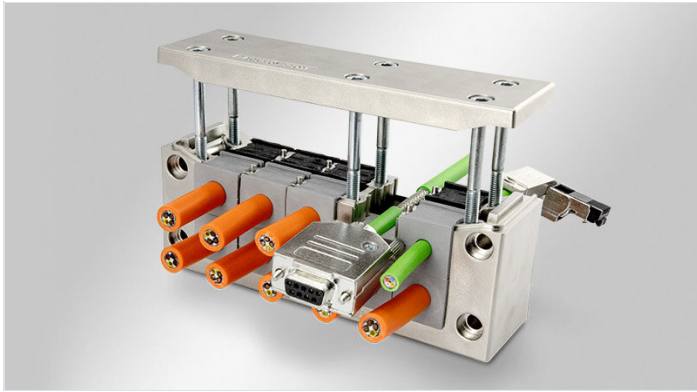


EMC-KEL-DS | Split EMC cable entry frames

for shielding cables with connectors / IP55



The EMC cable entry frame EMC-KEL-DS has been metallised (galvanise coated) to create a conductive surface.

The front cable grommet (KT) is used for strain relief and cable sealing on the cable jacket. The cable shield is contacted over 360° via the rear conductive grommet (EMC-KT).

The EMC-KEL-DS frames match exactly the cut-out dimensions for 24-pin standard industrial connectors. Either a cut-out of 36 mm or 46 mm in height can be chosen depending on the cables being routed.

The contact between the EMC-KEL-DS and the conductive housing wall is realised via the included conductive flat gasket.

IP54

IP55

RIWA



RoHS compliant



Made in Germany

Specifications

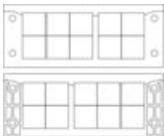
IP rating (EN 60529)	IP54, IP55
Material	Polyamide, highly conductive coating
Flame class	UL94-HB
Operating temperature	-40 C° to 140 C°
Mounting options	Screw type mounting

Advantages & benefits

- Sowohl schirmgebundene als auch feldgebundene Störungen können zuverlässig abgeleitet werden
- Integrierte Zugentlastung und Abdichtung sind von der EMV-Kontaktierung getrennt
- Kratzfeste Oberfläche
- Kontaktierung des Kabelschirms über 360°
- EMV-Tüllen komplett aus leitfähigem Elastomer
- Sehr gute Ableitwerte
- Sehr gute Abschirmwirkung bzgl. EMV-Dichtigkeit

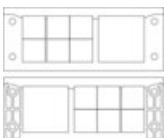
Product types & sizes

EMC-KEL-DS 24|10

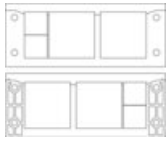


Part No.	99410	Height	40 mm
EAN	4251269322679	Mounting height	40 mm
PU	1	Cut-out size	112 x 36 mm
For max. no. of cables	10	No. of screw holes	4
Max. cable diameter	17 mm	Diam. of screw holes	5,8 mm
Length	147 mm	Screw material	Stahl, galvanisch verzinkt
Width	58 mm	Suitable for grommets	10 x EMC-KT small 10 x KT small

EMC-KEL-DS 24|7



Part No.	99411	Height	40 mm
EAN	4251269322686	Mounting height	40 mm
PU	1	Cut-out size	112 x 36 mm
For max. no. of cables	7	No. of screw holes	4
Max. cable diameter	35 mm	Diam. of screw holes	5,8 mm
Length	147 mm	Screw material	Stahl, galvanisch verzinkt
Width	58 mm	Suitable for grommets	6 x EMC-KT small 1 x EMC-KT large

EMC-KEL-DS 24/4

Part No.	99412	Height	40 mm
EAN	4251269322693	Mounting height	40 mm
PU	1	Cut-out size	112 x 36 mm
For max. no. of cables	4	No. of screw holes	4
Max. cable diameter	35 mm	Diam. of screw holes	5,8 mm
Length	147 mm	Screw material	Stahl, galvanisch verzinkt
Width	58 mm	Suitable for grommets	2 x EMC-KT small 2 x EMC-KT large

EMC gasket 24

Part No.	99550	Mounting height	2,5 mm
EAN		Cut-out size	112 x 36 mm
PU	1	No. of screw holes	4
Max. cable diameter	35 mm	Diam. of screw holes	6 mm
Length	145 mm	Screw material	Stahl, galvanisch verzinkt
Width	56 mm		
Height	2,5 mm		