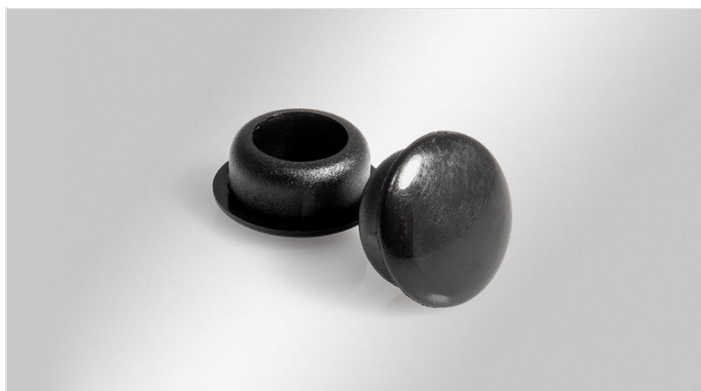


Cover plugs

for cable entry frames & plates

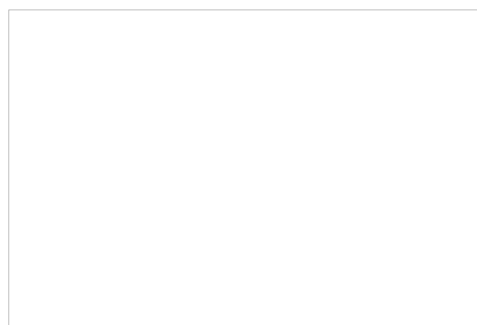


RoHS
compliant

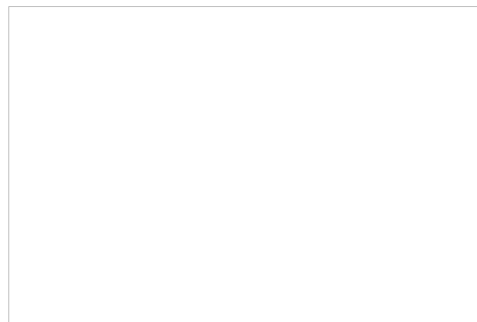
The openings at the fastening points of the cable entry frames can be closed with the cover plugs.

There are two versions: One version to cover the openings when using threaded bushings, one to cover the screws. The cover plugs can be used with the products of the KEL series.

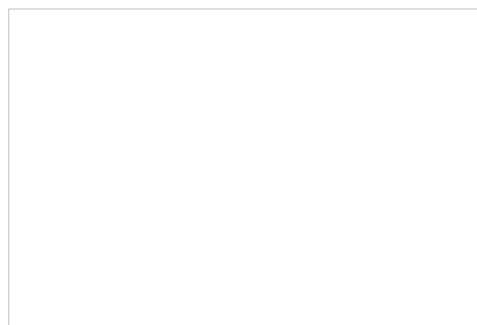
The cover plugs can also be used with the products of the KEL-DPZ series. They are available in black and grey.



When fastening from the rear using a threaded bushing, an opening is created at the front at the fastening points. These can be closed with the **cover plugs A** in black (Order No. 99142).



When fastening from the front by means of screws, the openings at the screw heads can be closed with the **cover plugs B** in black (order no. 99200) or **cover plugs C** in grey (order no. 99201). The cover plugs can only be used for M5 DIN 912 screws.



When fastening from the front by means of screws, the openings at the screw heads can be closed with the **cover plugs B** in black (order no. 99200) or **cover plugs C** in grey (order no. 99201). The cover plugs can only be used for M5 DIN 912 screws.

Specifications

Material	Polyethylene
Operating temperature	0 C° to 70 C°
Properties	higher chemical resistance

Advantages & benefits

- Einfaches Verschließen der Öffnungen an den Befestigungspunkten der KEL-Rahmen / KEL-DPZ-Platten
- Glatter Abschluss an der Rahmenoberfläche
- Keine Schmutznischen

Product types & sizes

Cover plug A



Part No.	99142
EAN	
Package quantity	100
Height	4 mm
Colour	schwarz
Suitable for cable entry systems:	KEL-ER / KEL-U / KEL / KEL-QUICK / KEL 183 / KEL-FL

Cover plug B



Part No.	99200
EAN	4251269324208
Package quantity	40
Height	3 mm
Colour	schwarz
Suitable for cable entry systems:	KEL-ER / KEL-U / KEL / KEL-QUICK / KEL 183 / KEL-FL / KEL-DPZ

Cover plug C



Part No.	99201
EAN	4251269324215
Package quantity	40
Height	3 mm
Colour	grau (ähnlich RAL 7035)
Suitable for cable entry systems:	KEL-DPZ